

# Series 16DM – DPDT Load Contact Series 16VM – Field Selectable Sensitivity

- ▶ Compact Size
- ▶ Modular Plug-In Design
- ▶ LED Monitoring
- ▶ Surge Protection
- ▶ Various Time Delays
- ▶ Low Voltage Sensor
- ▶ Solid State Reliability
- ▶ Up to 1 Million Ohms/cm Sensitivity
- ▶ 11-Pin Octal or DIN Style Plug
- ▶ CSA Approved
- ▶ U.L. “Motor Control”

Series 16DM plug-in controls provide general purpose single-level or differential service with DPDT load contacts to eliminate the need for slave relays. Series 16VM has external setpoint resistors for the added flexibility of field adjustable sensitivity. Option for adjustable time delay also available.

## Specifications

<b>Contact Design</b>	
Series 16DM	2 N.O. & 2 N.C. (2 form C)
Series 16VM	1 N.O. & 1 N.C. (1 form C)
<b>Contact Rating (120, 240VAC)</b>	
Series 16DM	5 amp Resistive 1/10 hp
Series 16VM	10 amp Resistive 1/3 hp
<b>Mode of Operation</b>	
	Direct/Inverse, factory set
<b>Sensitivity</b>	
Series 16DM	0-1M ohm, factory set
Series 16VM	0-1M ohm, field adjustable
<b>Primary Voltage</b>	
	24 VAC, 120 VAC, 240 VAC (+10%/-15%) 50/60 Hz
<b>Secondary Voltage</b>	
	12 VAC, 1.5 mA
<b>Temperature</b>	
	-40°F to 150°F
<b>Approvals</b>	
	U.L. 508 File # E44426; CSA
<b>Terminal Style</b>	
	Screw connector
<b>Options</b>	
	Time Delays

## How to Order

Use the **Bold** characters from the chart below to construct a product code.

**16DM X X M X X XX XX**

Series **16DM** **16VM**

Mode of Operation<sup>1</sup>

Direct	Inverse
<b>A</b> – 4.7K <b>E</b> – 100K	<b>K</b> – 4.7K <b>P</b> – 100K
<b>B</b> – 10K <b>F</b> – 470K	<b>L</b> – 10K <b>R</b> – 470K
<b>C</b> – 26K <b>G</b> – 1M	<b>M</b> – 26K <b>S</b> – 1M
<b>D</b> – 50K	<b>N</b> – 50K

Supply Voltage

**1** – 120 VAC    **2** – 240 VAC<sup>2</sup>    **3** – 24 VAC    **8** – 208/240 VAC<sup>3</sup>

Socket Style

**A** – 11 Pin Octal    **B** – DIN Mount    **M** – None, Module Only

Enclosure

**0** – None    **1** – NEMA 1    **4** – NEMA 4

Optional Character<sup>4</sup>

Time Delay (increasing level); OV adj. (16 VM only)  
**01** – 20 – seconds    **OV** – variable

Time Delay (decreasing level); OV adj. (16 VM only)  
**01** – 20 – seconds    **OV** – variable

— Standard part numbers

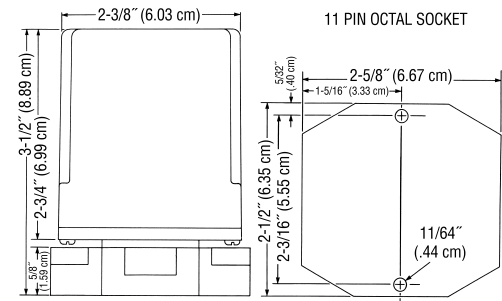


Series 16VM

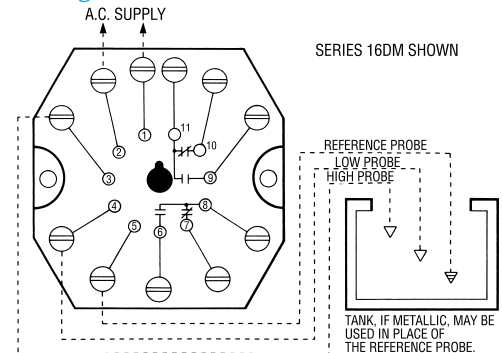
## Applications

- Single Level Service
- Differential Service
- Point Level
- Alarms
- Valve Control
- Pump Control

## Dimensions



## Wiring



### Notes:

1. 16DM only. Series 16VM includes full set of the resistors listed above. Specify a sensitivity to determine mode of operation.
2. Standard only on Series 16DM.
3. Offered on Series 16DM only.
4. See page E-29 for descriptions.